



INUI-Cleaner-Smarter-Brighter™

THE CUTTING-EDGE IN COVID-19 PREVENTION

GLOBAL LEADERS
UVC DISINFECTION

Change Your Current Lights & Keep COVID-19 at Bay



Traditional LED lighting



INUI-Cleaner-Smarter-Brighter™ Lighting

INUI-Cleaner-Smarter-Brighter™ Lighting is leading the way with integrating UV-C disinfection into everyday LED lighting. This series of unprecedented health-protecting lighting products provide the three-fold usage of surface disinfection, air-cleaning, and illumination all in one product. Boasting a disinfection rate up to 99.9%*—with no excess radiation, no ozone produced, and no residual chemicals—and with a built in military-grade radar sensor to detect anyone around, INUI-Cleaner-Brighter-Smarter™ is designed to keep people safe and healthy.

What is Cleaner-Smarter-Brighter™

Intelligent, Automatic Disinfection, Air-Cleaning, and Lighting. 3-in-1.



3-in-1

Intelligent, Automatic Disinfection, Air-Cleaning, and Lighting.

Simple Replacement

Just Change Your old Light.

Intelligent Operation

Normal Illumination while you're there, disinfection when you leave.

Safe and Reliable

Military-grade radar and radar self-diagnosis. No chemical residue.

Keep Spaces Free of COVID-19

No extra manpower. Highly cost-effective.

Minimize Infection Spread

Disinfection occurs immediately after people leave the room.

Many public places around the world already use UV-C to battle COVID-19



Hospital robots are disinfecting with UV-C



Buses are being disinfected with UV-C

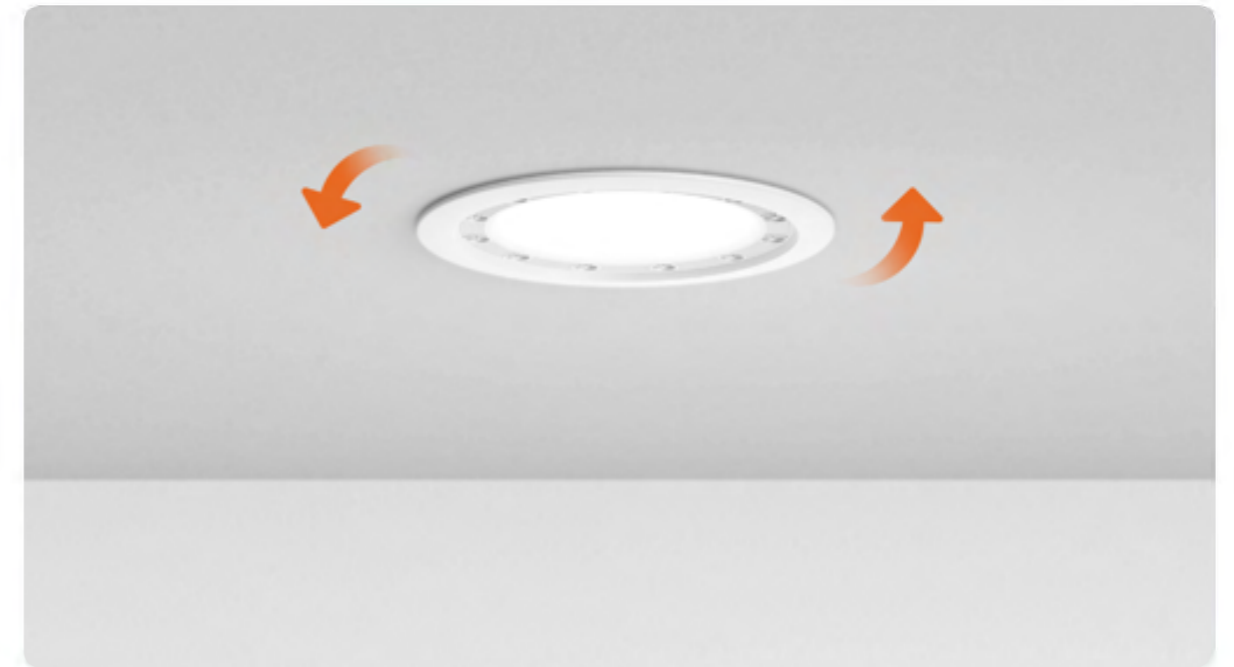


Boeing aircraft are being disinfected with UV-C



New York City subways are being disinfected with UV-C

Upgrade any Lighting System to UV-C with INUI-Cleaner-Smarter-Brighter™ Lighting



Restaurants



Bars



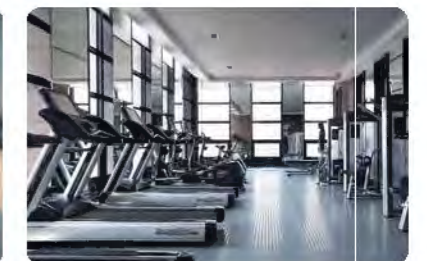
Toilets



Meeting rooms



Elevators



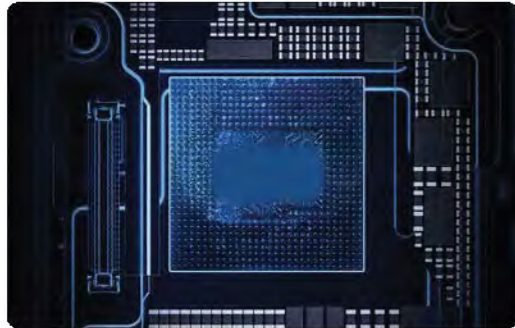
Cyms

Applications: restaurants, bars, barber shops, restrooms, meeting rooms, banks, gyms, elevators, hotels, clinics, nursing homes, convenience stores, supermarkets, retail stores, entertainment venues, etc.

Safety

1. Advanced 5.8G military-grade Microwave

Each INUI™ Lighting product is equipped with a military-grade 5.8G Microwave with a detection distance of 7-10 meters that automatically stops disinfection when people are nearby.



2. Self-check safety system

Before each disinfection cycle, a self-diagnosis is performed to ensure safe product performance. If the radar fails, disinfection stops automatically.



3. No dangerous ozone produced

Operates with a UV-C disinfection wavelength of 260-285nm, well above the 240nm or less that decomposes oxygen into ozone that can damage the respiratory tract.

*Ozone will corrode the mucosa of the respiratory tract and cause serious damage to the respiratory tract.

*UV below 240nm will decompose oxygen in the air to form ozone.

Easy operation

Lighting Mode

Turn the switch ON and OFF to control.



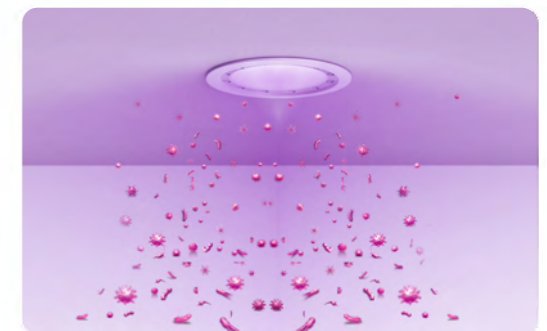
2-hour Disinfection Mode

Flip the switch ON-OFF-ON within 3 seconds to turn on. Disinfection stops automatically after 2 hours.



20-min Auto-Disinfection Mode

Flip the switch ON-OFF-ON-OFF-ON within 3 seconds to turn on. Disinfection automatically stops when people or pets approach. Illuminates while you are there, disinfects when you leave.



The measurement standard of INUI-Cleaner-Smarter-Brighter™ Lighting for killing germs

Measurement formula for killing germs

广微测 Gmicro Testing
MA 20191900093 CNAS
广东省微生物分析检测中心
ANALYSIS AND TEST RESULT

报告编号 (Report No.): 2020SP9404R02D
1. 作用距离 Action distance: 40cm
2. 测试结果 Results:

Test organisms	Action Time	Test group	Average cfu of testing groups (cfu/片 piece)	Average cfu of positive controls (cfu/片 piece)	Sterilization logarithm (KL)	Sterilization rate (%)
Staphylococcus aureus ATCC 6538	16s	1	<5	3.1×10 ⁷	>5.79	>99.99
		2	<5	3.0×10 ⁷	>5.78	>99.99
		3	<5	3.2×10 ⁷	>5.81	>99.99
	Average				>5.79	>99.99
	80s	1	<5	3.1×10 ⁷	>5.79	>99.99
		2	<5	3.0×10 ⁷	>5.78	>99.99
		3	<5	3.2×10 ⁷	>5.81	>99.99
	Average				>5.79	>99.99
	65s	1	20	3.1×10 ⁷	5.19	99.99
		2	10	3.0×10 ⁷	5.48	99.99
		3	25	3.2×10 ⁷	5.11	99.99
	Average			5.26	99.99	
	40s	1	2.6×10 ⁷	3.1×10 ⁷	4.08	99.99
		2	2.3×10 ⁷	3.0×10 ⁷	4.12	99.99
		3	2.9×10 ⁷	3.2×10 ⁷	4.05	99.99
	Average			4.08	99.99	
	40s	1	4.2×10 ⁷	3.1×10 ⁷	3.87	99.99
		2	3.7×10 ⁷	3.0×10 ⁷	3.91	99.99
3		4.4×10 ⁷	3.2×10 ⁷	3.87	99.99	
Average			3.88	99.99		
32s	1	8.5×10 ⁷	3.1×10 ⁷	3.56	99.97	
	2	9.0×10 ⁷	3.0×10 ⁷	3.53	99.97	
	3	9.5×10 ⁷	3.2×10 ⁷	3.53	99.97	
Average			3.54	99.97		
25s	1	2.4×10 ⁷	3.1×10 ⁷	3.11	99.92	
	2	2.8×10 ⁷	3.0×10 ⁷	3.03	99.91	
	3	2.7×10 ⁷	3.2×10 ⁷	3.08	99.92	
Average			3.07	99.91		

(续下页, Continued on the next page)
第 3 页 共 5 页

广微测 Gmicro Testing
MA 20191900093 CNAS
广东省微生物分析检测中心
ANALYSIS AND TEST RESULT

报告编号 (Report No.): 2020SP9404R04D
1. 作用距离 Action distance: 160cm
2. 测试结果 Results:

Test organisms	Action Time	Test group	Average cfu of testing groups (cfu/片 piece)	Average cfu of positive controls (cfu/片 piece)	Sterilization logarithm (KL)	Sterilization rate (%)
Staphylococcus aureus ATCC 6538	5000s	1	<5	3.1×10 ⁷	>5.79	>99.99
		2	<5	3.0×10 ⁷	>5.78	>99.99
		3	<5	3.2×10 ⁷	>5.81	>99.99
	Average				>5.79	>99.99
	2500s	1	<5	3.1×10 ⁷	>5.79	>99.99
		2	<5	3.0×10 ⁷	>5.78	>99.99
		3	<5	3.2×10 ⁷	>5.81	>99.99
	Average				>5.79	>99.99
	2000s	1	<5	3.1×10 ⁷	>5.79	>99.99
		2	<5	3.0×10 ⁷	>5.78	>99.99
		3	<5	3.2×10 ⁷	>5.81	>99.99
	Average				>5.79	>99.99
	1500s	1	4.5×10 ⁷	2.4×10 ⁷	3.84	99.99
		2	3.7×10 ⁷	2.7×10 ⁷	3.91	99.99
		3	4.3×10 ⁷	2.8×10 ⁷	3.88	99.99
	Average			3.88	99.99	
	1250s	1	6.0×10 ⁷	2.4×10 ⁷	3.71	99.98
		2	5.5×10 ⁷	2.7×10 ⁷	3.74	99.98
3		6.5×10 ⁷	2.8×10 ⁷	3.70	99.98	
Average			3.72	99.98		
1000s	1	8.0×10 ⁷	2.4×10 ⁷	3.59	99.97	
	2	7.5×10 ⁷	2.7×10 ⁷	3.60	99.98	
	3	8.0×10 ⁷	2.8×10 ⁷	3.61	99.98	
Average			3.60	99.98		
750s	1	1.2×10 ⁸	2.4×10 ⁷	3.41	99.96	
	2	1.1×10 ⁸	2.7×10 ⁷	3.44	99.96	
	3	1.3×10 ⁸	2.8×10 ⁷	3.40	99.96	
Average			3.42	99.96		

(续下页, Continued on the next page)
第 3 页 共 5 页

广微测 Gmicro Testing
MA 20191900093 CNAS
广东省微生物分析检测中心
ANALYSIS AND TEST RESULT

报告编号 (Report No.): 2020SP9404R01D
1. 作用距离 Action distance: 40cm
2. 测试结果 Results:

Test organisms	Action Time	Test group	Average cfu of testing groups (cfu/片 piece)	Average cfu of positive controls (cfu/片 piece)	Sterilization logarithm (KL)	Sterilization rate (%)
Escherichia coli 8099	16s	1	<5	2.4×10 ⁷	>5.68	>99.99
		2	<5	2.7×10 ⁷	>5.73	>99.99
		3	<5	2.8×10 ⁷	>5.75	>99.99
	Average				>5.72	>99.99
	80s	1	<5	2.4×10 ⁷	>5.68	>99.99
		2	<5	2.7×10 ⁷	>5.73	>99.99
		3	<5	2.8×10 ⁷	>5.75	>99.99
	Average				>5.72	>99.99
	65s	1	<5	2.4×10 ⁷	>5.68	>99.99
		2	<5	2.7×10 ⁷	>5.73	>99.99
		3	<5	2.8×10 ⁷	>5.75	>99.99
	Average				>5.72	>99.99
	40s	1	45	2.4×10 ⁷	4.73	99.99
		2	65	2.7×10 ⁷	4.62	99.99
		3	80	2.8×10 ⁷	4.55	99.99
	Average			4.63	99.99	
	40s	1	1.8×10 ⁷	2.4×10 ⁷	4.12	99.99
		2	1.9×10 ⁷	2.7×10 ⁷	4.15	99.99
3		2.1×10 ⁷	2.8×10 ⁷	4.13	99.99	
Average			4.13	99.99		
32s	1	2.5×10 ⁷	2.4×10 ⁷	3.98	99.99	
	2	2.7×10 ⁷	2.7×10 ⁷	4.00	99.99	
	3	2.8×10 ⁷	2.8×10 ⁷	4.00	99.99	
Average			3.99	99.99		
25s	1	3.6×10 ⁷	2.4×10 ⁷	3.82	99.99	
	2	3.8×10 ⁷	2.7×10 ⁷	3.85	99.99	
	3	3.8×10 ⁷	2.8×10 ⁷	3.87	99.99	
Average			3.85	99.99		

(续下页, Continued on the next page)
第 3 页 共 5 页

广微测 Gmicro Testing
MA 20191900093 CNAS
广东省微生物分析检测中心
ANALYSIS AND TEST RESULT

报告编号 (Report No.): 2020SP9404R03D
1. 作用距离 Action distance: 160cm
2. 测试结果 Results:

Test organisms	Action Time	Test group	Average cfu of testing groups (cfu/片 piece)	Average cfu of positive controls (cfu/片 piece)	Sterilization logarithm (KL)	Sterilization rate (%)
Escherichia coli 8099	5000s	1	<5	2.4×10 ⁷	>5.68	>99.99
		2	<5	2.7×10 ⁷	>5.73	>99.99
		3	<5	2.8×10 ⁷	>5.75	>99.99
	Average				>5.72	>99.99
	2500s	1	<5	2.4×10 ⁷	>5.68	>99.99
		2	<5	2.7×10 ⁷	>5.73	>99.99
		3	<5	2.8×10 ⁷	>5.75	>99.99
	Average				>5.72	>99.99
	2000s	1	<5	2.4×10 ⁷	>5.68	>99.99
		2	<5	2.7×10 ⁷	>5.73	>99.99
		3	<5	2.8×10 ⁷	>5.75	>99.99
	Average				>5.72	>99.99
	1500s	1	35	2.4×10 ⁷	4.84	99.99
		2	35	2.7×10 ⁷	4.89	99.99
		3	45	2.8×10 ⁷	4.80	99.99
	Average			4.84	99.99	
	1250s	1	3.2×10 ⁷	2.4×10 ⁷	3.87	99.99
		2	3.6×10 ⁷	2.7×10 ⁷	3.87	99.99
3		3.9×10 ⁷	2.8×10 ⁷	3.86	99.99	
Average			3.87	99.99		
1000s	1	5.0×10 ⁷	2.4×10 ⁷	3.68	99.98	
	2	5.5×10 ⁷	2.7×10 ⁷	3.69	99.98	
	3	5.5×10 ⁷	2.8×10 ⁷	3.71	99.98	
Average			3.69	99.98		
750s	1	9.0×10 ⁷	2.4×10 ⁷	3.43	99.96	
	2	9.5×10 ⁷	2.7×10 ⁷	3.45	99.96	
	3	1.0×10 ⁸	2.8×10 ⁷	3.45	99.96	
Average			3.44	99.96		

(续下页, Continued on the next page)
第 3 页 共 5 页

UV Dose μj/cm ² = μW/cm ² x seconds	Disinfection Rate
1000 μj/cm ²	99%*
1500 μj/cm ²	99.90%*
2000 μj/cm ²	99.95%*
4000 μj/cm ²	99.99%*

*Staphylococcus Aureus. The preceding data is derived from reports obtained from third-party laboratory testing.

Measurement Formula

1. UV Dose (μj) = UV Concentration (μW/cm²) x Time(Seconds)

2. UV Concentration (μW/cm²) = $\frac{\text{UV Power } (\mu W)}{\text{Area } (cm^2)}$

* 1mW = 10³μW, 1m² = 10⁴ cm²

Example

INUI™ Downlight UV Power is 180mW, Disinfection Area is 9m²

1. UV Concentration: $\frac{180mW}{9m^2} = 20mW/m^2 = 2\mu W/cm^2$

2. Time required for 99.9%: $\frac{1500\mu j}{2\mu W/cm^2} = 750sec$ (12.5mins)

UV Radiation Limits and Calculations

According to IEC62471 of the International Electrolisis Institute and the CDC's National Institute for Occupational Safety and Health, people should not be exposed to more than 30j/m² of UV radiation.

Effective irradiance, E. (μW/cm ²)	Duration Of expose per day
0.8 μW/cm ²	1 h
1.7 μW/cm ²	30 min
3.3 μW/cm ²	15 min
5 μW/cm ²	10 min
10 μW/cm ²	5 min
50 μW/cm ²	1 min
100 μW/cm ²	30 s

Example

INUI™ downlights have a UV concentration of 2μW/cm², thus applying the formula to a INUI™ Downlight.

The safety threshold would be calculated as: $\frac{3000\mu j/cm^2 (30j/m^2)}{2\mu W/cm^2} = 1500sec$ (25mins)

*Representative colonies: S. aureus, E.coli, they are the standard representative colonies in the UV-C disinfection tests of the WHO, representing 99.9% of bacterial characteristics.

Under normal circumstances, the WHO stipulates that it is necessary to pass the test of these two kinds of bacteria, so that the disinfection ability of the UV equipment can be determined to be qualified.

Upgrade any Lighting to UV-C with INUI-Cleaner-Smarter-Brighter™ Lighting



Change to



Change to

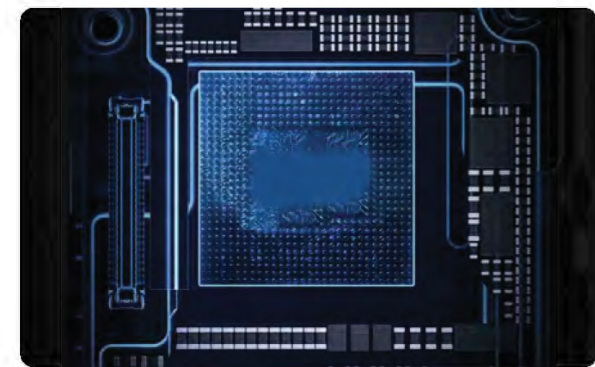
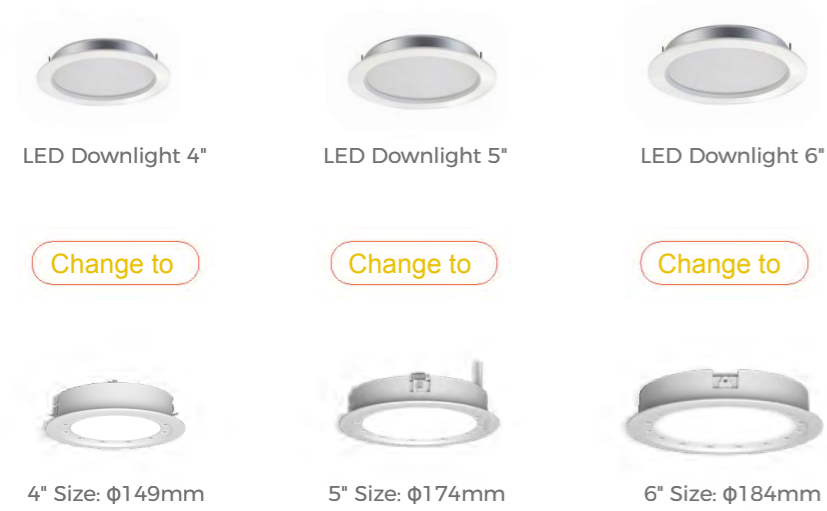


Change to



INUI-Cleaner-Smarter-Brighter™ Downlight

Intelligent, Automatic Disinfection, Air-Cleaning, and Lighting. 3-in-1.



Microwave



Power box

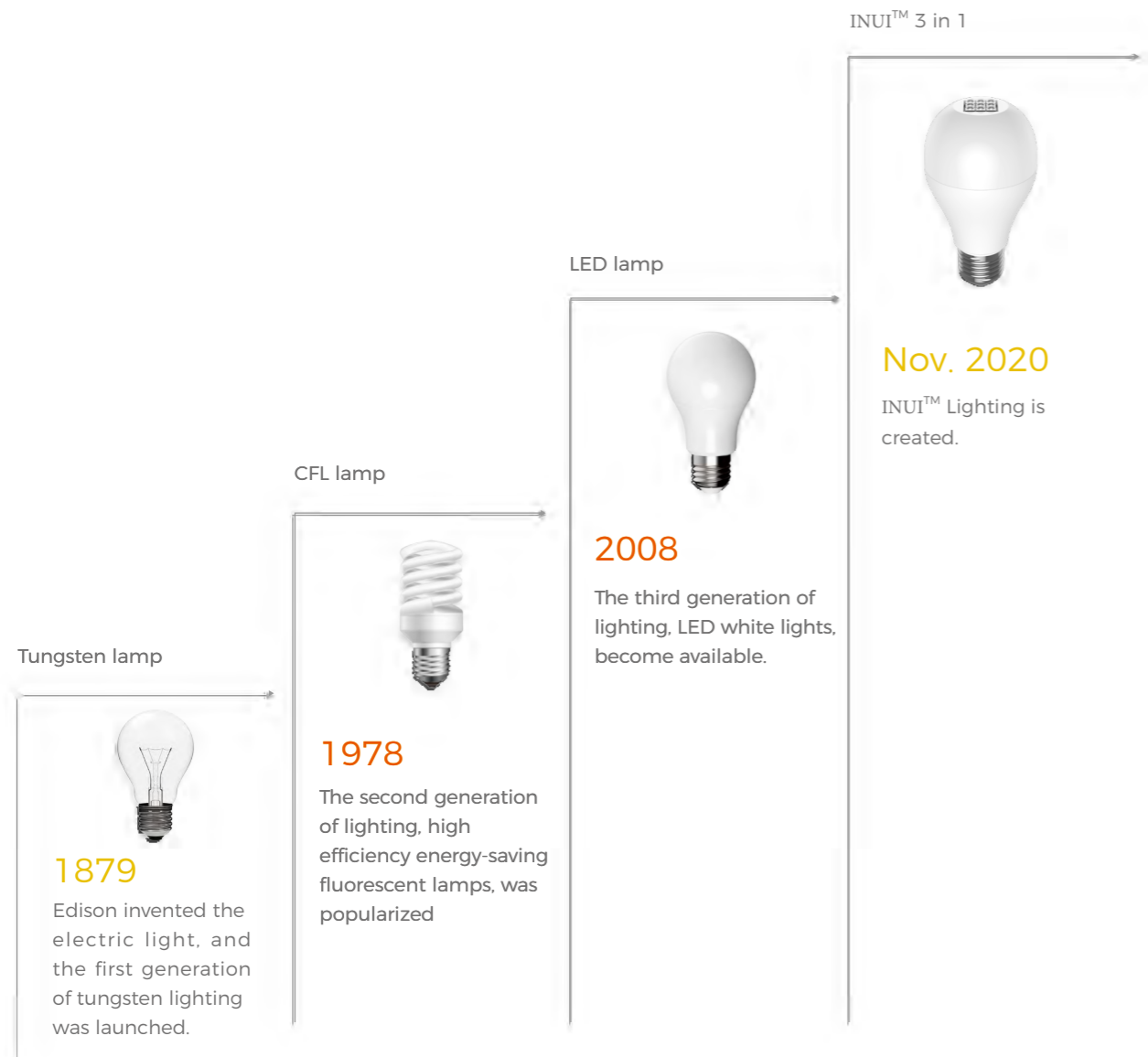


99.9% Kills up to 99.9% of all Germs

Military-grade Microwave sensor ensures safe use

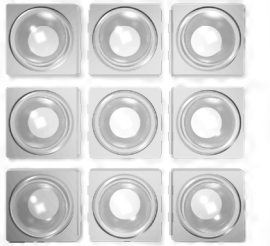
	4" Size: φ149mm	5" Size: φ174mm	6" Size: φ184mm
Lighting Specifications			
Power	14W	18W	18W
Brightness	> 1190 lm	> 1530 lm	> 1530 lm
Color Temperature	3000K/4000K/6000K	3000K/4000K/6000K	3000K/4000K/6000K
Color Chromaticity	SDCM<5	SDCM<5	SDCM<5
CRI	>80	>80	>80
Lamp Lifespan	>20,000 hrs	>20,000 hrs	>20,000 hrs
UV Specifications			
Diode Type	UV-C LED	UV-C LED	UV-C LED
Power	18W	18W	20W
UV Energy	180mW	180mW	200mW
Disinfection Area	3 x 3m(9m ²)	3 x 3m(9m ²)	3 x 3m(9m ²)
Disinfection Modes	20 min Automatic mode, 2 hrs Intensive mode	20 min Automatic mode, 2 hrs Intensive mode	20 min Automatic mode, 2 hrs Intensive mode
Detection Sensor	5.8G	5.8G	5.8G
Beam Radius	100°	100°	100°
Wavelength	260-285nm	260-285nm	260-285nm
Lamp Lifespan	>10,000 hrs	>10,000 hrs	>10,000 hrs
Power Specifications			
Voltage	100-240V AC	100-240V AC	100-240V AC
Power	50 / 60Hz	50 / 60Hz	50 / 60Hz
Adjustable Color Temperature	No	No	No
Operation Modes	Manual switch mode / radar sensor automatic mode	Manual switch mode / radar sensor automatic mode	Manual switch mode / radar sensor automatic mode
Physical Specifications			
Lamp Body Materials	Aluminum alloy and plastic	Aluminum alloy and plastic	Aluminum alloy and plastic
Lamp Body Color	Dark gray and white	Dark gray and white	Dark gray and white
Lamp Size	φ149 x 35mm	φ174x35mm	φ184x35mm
Required Hole Size	φ130-140mm	φ155-165mm	φ165-175mm
Lamp Weight	Main body: 325g (11.5oz) + LED driver: 85g (3oz)	Main body: 405g (11.5oz) + LED driver: 85g (3oz)	Main body: 480g + LED driver: 85g (3oz)
Operating Temperature	-10°C-50°C (14°F-122°F)	-10°C-50°C (14°F-122°F)	-10°C-50°C (14°F-122°F)
Certifications and Warranty			
Certifications	FCC, CE	FCC, CE	FCC, CE
Warranty	2 Years	2 Years	2 Years

The Dawn of a New Era of Lighting INUI-Cleaner-Smarter-Brighter™ has Arrived



UV-C LED used to be an expensive technology, costing more than their weight in gold

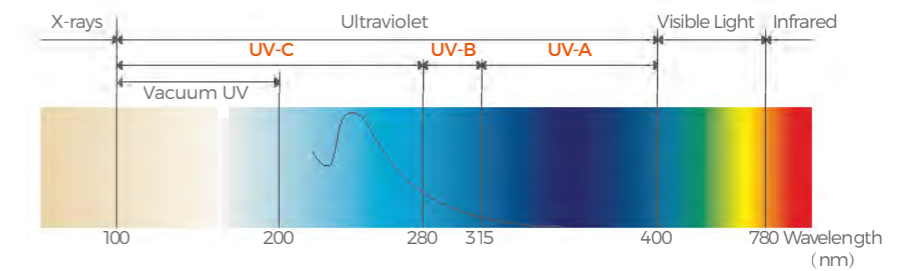
UV-C LEDs were originally developed by Sensor Electronic Technology, Inc. in the USA to disinfect water for astronauts. The cost of each diode was about US \$1,400/PCS at that time. As recently as 2017 the price of each diode was still US \$20/PCS. Nowadays, driven by INUI's innovative technology, UV-C LEDs are becoming consumer products and coming into our lives.



Scan & See in Action

UV-C Disinfection Principle

- UV-C: 100-280nm, (UVC LED produces UV lights at wavelength between 260-280nm can destroy DNA/RNA of germs and bacteria effectively)
- UV-B: 280-315nm, Protein analysis, Light therapy in medicine mostly
- UV-A: 315-400nm, Curing of polymers and printer inks



INUI™ Panel Light

Intelligent, Automatic Disinfection, Air-Cleaning, and Lighting. 3-in-1.

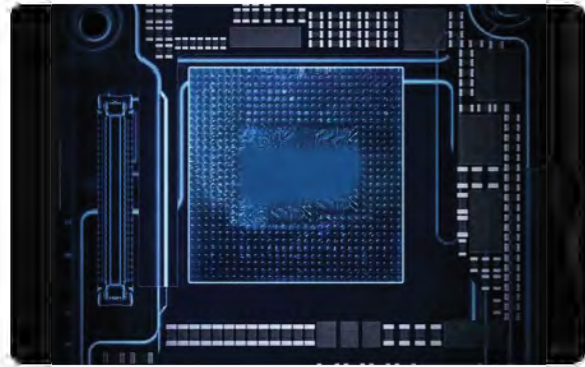


Size: Φ600x600mm

Change to



Size: Φ600x600mm



Microwave

99.9%

Kills up to 99.9% of all Germs



Military-grade Microwave sensor ensures safe use

Size: Φ600x600mm

Lighting Specifications

Power	48W
Brightness	>4080 lm
Lighting Color	Daylight white
Color Temperature	6000K
Color Chromaticity	SDCM<5
CRI	>80
Lamp Lifespan	>20,000 hrs

UV Specifications

Diode Type	UV-C LED
Power	24W
Total UV Energy	240mW
Sterilization Area	3 x 3m(9m ²)
Disinfection Modes	20 min Automatic mode, 2 hrs Intensive mode
Detection Sensor	5.8G
Beam Radius	100°
Wavelength	260-285nm
Lamp Lifespan	>10,000 hrs

Power Specifications

Voltage	100-240V AC
Power	50 / 60Hz
Adjustable Color Temperature	No
Operation Modes	Manual switch mode / radar sensor automatic mode

Physical Specifications

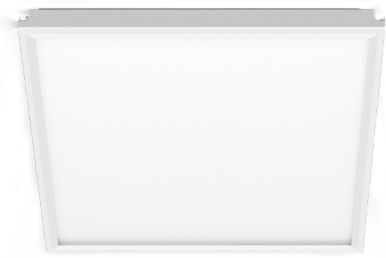
Lamp Body Materials	Aluminum alloy ad stainless iron
Lamp Body Color	White
Lamp Size	Φ595x595x30.8mm
Lamp Weight	1820g
Operating Temperature	-10°C-50°C (14°F-122°F)

Certifications and Warranty

Certifications	FCC, CE
Warranty	2 Years

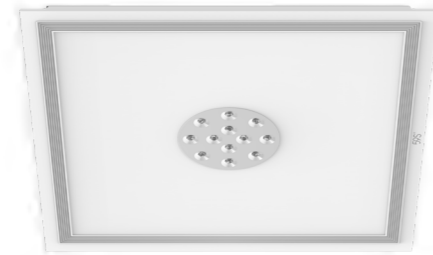
INUI™ Panel Light

Intelligent, Automatic Disinfection, Air-Cleaning, and Lighting. 3-in-1.

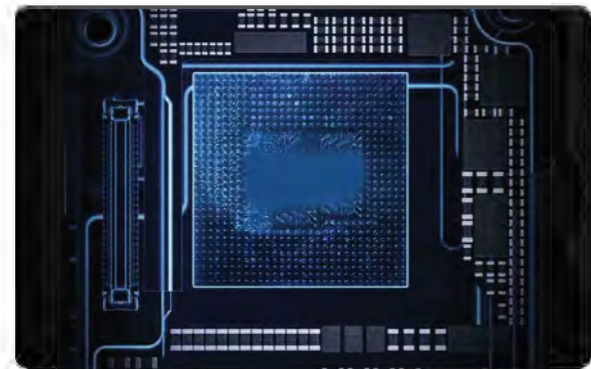


Size: Φ300x300mm

Change to



Size: Φ300x300mm



Microwave



Kills up to 99.9% of all Germs



Military-grade Microwave sensor ensures safe use

Size: Φ300x300mm

Lighting Specifications

Power	24W
Brightness	>2040 lm
Lighting Color	Daylight white
Color Temperature	6000K
Color Chromaticity	SDCM<5
CRI	>80
Lamp Lifespan	>20,000 hrs

UV Specifications

Diode Type	UV-C LED
Power	18W
Total UV Energy	180mW
Sterilization Area	3 x 3m(9m ²)
Disinfection Modes	20 min Automatic mode, 2 hrs Intensive mode
Detection Sensor	5.8G
Beam Radius	100°
Wavelength	260-285nm
Lamp Lifespan	>10,000 hrs

Power Specifications

Voltage	100-240V AC
Power	50 / 60Hz
Adjustable Color Temperature	No
Operation Modes	Manual switch mode / radar sensor automatic mode

Physical Specifications

Lamp Body Materials	Alluminum alloy ad stainless iron
Lamp Body Color	White
Lamp Size	Φ295x295x30.8mm
Lamp Weight	670g
Operating Temperature	-10°C-50°C (14°F-122°F)

Certifications and Warranty

Certifications	FCC, CE
Warranty	2 Years

INUI™ Panel Light

Intelligent, Automatic Disinfection, Air-Cleaning, and Lighting. 3-in-1.

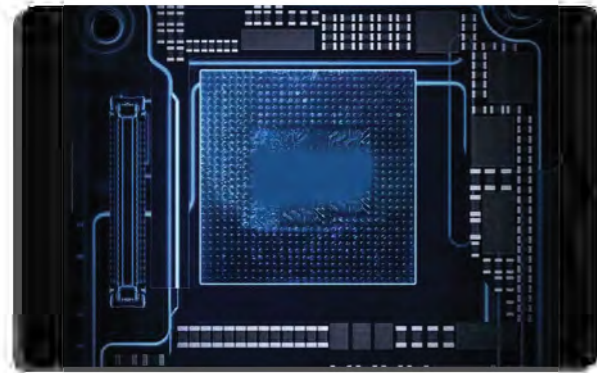


Size: Φ300x600mm

Size: Φ300x600mm

Size: Φ300x1200mm

Size: Φ300x1200mm



Microwave

99.9% Kills up to 99.9% of all Germs

Military-grade Microwave sensor ensures safe use

	Size: Φ300x600mm	Size: Φ300x1200mm
Lighting Specifications		
Power	30W	48W
Brightness	>2550 lm	>4080 lm
Lighting Color	Daylight white	Daylight white
Color Temperature	6000K	6000K
Color Chromaticity	SDCM<5	SDCM<5
CRI	>80	>80
Lamp Lifespan	>20,000 hrs	>20,000 hrs
UV Specifications		
Diode Type	UV-C LED	UV-C LED
Power	18W	24W
Total UV Energy	180mW	240mW
Sterilization Area	3 x 3m(9m ²)	3 x 3m(9m ²)
Disinfection Modes	20 min Automatic mode, 2 hrs Intensive mode	20 min Automatic mode, 2 hrs Intensive mode
Detection Sensor	5.8G	5.8G
Beam Radius	100°	100°
Wavelength	260-285nm	260-285nm
Lamp Lifespan	>10,000 hrs	>10,000 hrs
Power Specifications		
Voltage	100-240V AC	100-240V AC
Power	50 / 60Hz	50 / 60Hz
Adjustable Color Temperature	No	No
Operation Modes	Manual switch mode / radar sensor automatic mode	Manual switch mode / radar sensor automatic mode
Physical Specifications		
Lamp Body Materials	Alluminum alloy and stainless iron	Alluminum alloy and stainless iron
Lamp Body Color	White	White
Lamp Size	Φ300x600mm	Φ300x1200mm
Lamp Weight	1145g (40.4oz)	2150g
Operating Temperature	-10°C-50°C (14°F-122°F)	-10°C-50°C (14°F-122°F)
Certifications and Warranty		
Certifications	FCC, CE	FCC, CE
Warranty	2 Years	2 Years

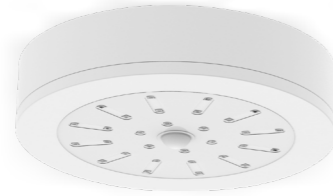
INUI™ Ceiling Light

Intelligent, Automatic Disinfection, Air-Cleaning, and Lighting. 3-in-1.

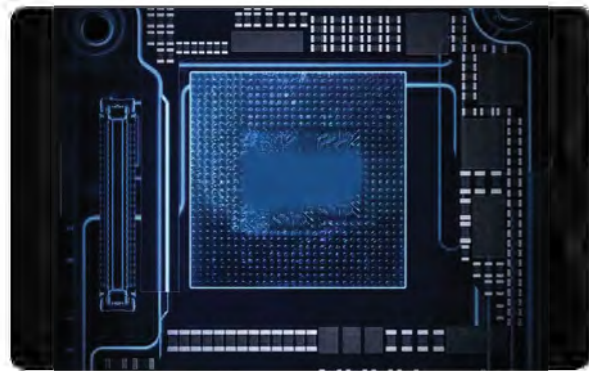


LED Ceiling light

Change to



Size: Φ180x53.3mm



Microwave

99.9%

Kills up to 99.9% of all Germs



Military-grade Microwave sensor ensures safe use



20mins Auto disinfection



30W disinfection 16W lighting

Size: Φ180x53.3mm

Lighting Specifications

Power	30W
Brightness	Max. 3000 lm
Color Temperature	6500K
Color Chromaticity	SDCM<5
CRI	>80
Lamp Lifespan	>20,000 hrs

UV Specifications

Diode Type	UV-C LED
Power	35W
Total UV Energy	300mW
Sterilization Area	3 x 3m(9m ²)
Disinfection Modes	10 min Automatic mode, 2 hrs Intensive mode
Detection Sensor	5.8G
Beam Radius	100°
Wavelength	260-285nm
Lamp Lifespan	>10,000 hrs

Power Specifications

Voltage	100-240V AC
Power	50 / 60Hz
Adjustable Color Temperature	No
Operation Modes	Manual switch mode / radar sensor automatic mode

Physical Specifications

Lamp Body Materials	Plastic
Lamp Body Color	White
Lamp Size	Φ180 x 53.3mm (7.1 x 2.1in)
Lamp Weight	475g (16.75oz)
Operating Temperature	-10-50°C (14-122°F)

Certifications and Warranty

Certifications	FCC, CE
Warranty	2 Years

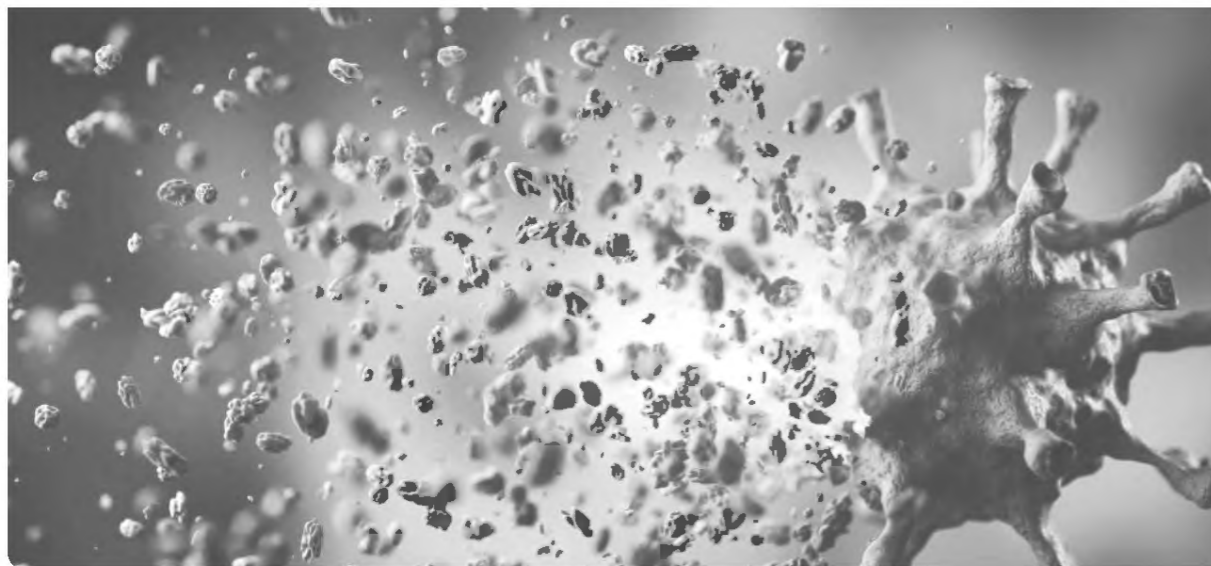
INUI™ Lighting Helps us be sick less and healthy more

Viruses are a huge threat to the health of each and every person.

Thus, INUI created Cleaner-Smarter-Brighter™ Lighting.

To kill germs, clean air, and give indoor lighting the germ-killing power of the sun.

So we can all be sick less and healthy more.



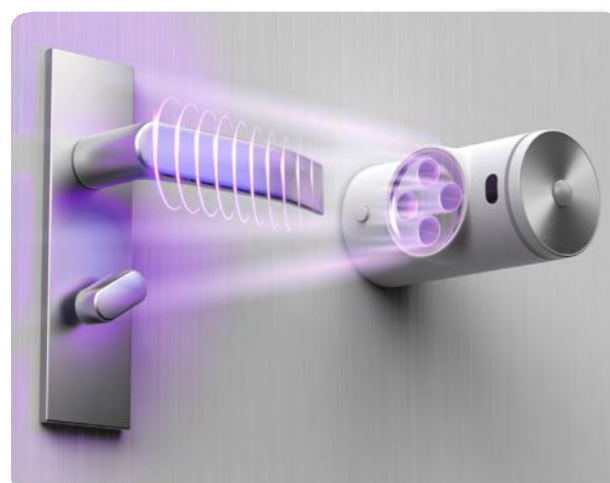
INUI™ Auto Door Handle Disinfect-or

A disinfect-or keeping your hands away from germs



Size: $\phi 47 \times 88 \text{mm}$

- Kills up to 99.9%** of all Germs
- Safety Military Microwave sensor**
- Immediate automatic door handle disinfection**
- No chemical residue, ozone, or extra radiation**
- Installs in 10 seconds**
- Works for up to 30 days on a single charge**



3 mounting bases of different thickness put the disinfecting LEDs the same distance from the door as the door handle.
Base thickness: 5mm / 11mm / 15mm (0.2 / 0.43 / 0.6in)

for
Handle distance from door: 45.5mm / 49.5mm / 54.5mm
(1.79 / 1.95 / 2.14in)

Size: $\phi 47 \times 88 \text{mm}$

UV Specifications

Diode Type	UV-C LED
Power	3W
UV Energy	$>200 \mu\text{W}/\text{cm}^2 @ 20\text{cm}$
Disinfection Modes	20s Automatic mode
Detection Sensor	5.8G
Beam Radius	100°
Wavelength	260-285nm
Lamp Lifespan	$>10,000 \text{ hrs}$

Power Specifications

Voltage	5DC 1A
Charging Time	approx. 2.5hrs
Internal Battery Capacity	2500mAH
Number of Uses per Full Charge	≥ 250
Max Operation Period per Full Charge	30 days
Operation Modes	Manual switch mode / Microwave sensor automatic mode

Physical Specifications

Lamp Body Materials	Plastic
Lamp Body Color	White or black
Lamp Size	$\phi 47 \times 88 \text{mm}$ (1.85 x 3.46 in)
Lamp Weight	115g (4.05oz)
Operating Temperature	$-10 \sim 50^\circ\text{C}$ (14-122°F)

Certifications and Warranty

Certifications	FCC, CE
Warranty	2 Years